



”
PRESENTS
Special Session on
Evolution of Mammals
FOR Students of class 5th - 12th
APRIL 13, 04:00 IST

JOIN US



SPEAKER:
MS. ASWATHA BIJU
YOUNGEST PALAEOLOGIST
IN INDIA

 www.kamp.res.in  +91 - 9599576228



KNOWLEDGE AND AWARENESS MAPPING PLATFORM

KNOWLEDGE SESSION 2023: EPISODE 24

ORGANISED BY: KNOWLEDGE AND AWARENESS MAPPING PLATFORM

A KNOWLEDGE ALLIANCE OF



Date: April 13, 2023

Topic: Evolution of Mammals

Organized for: Students (from 5th to 12th grade)

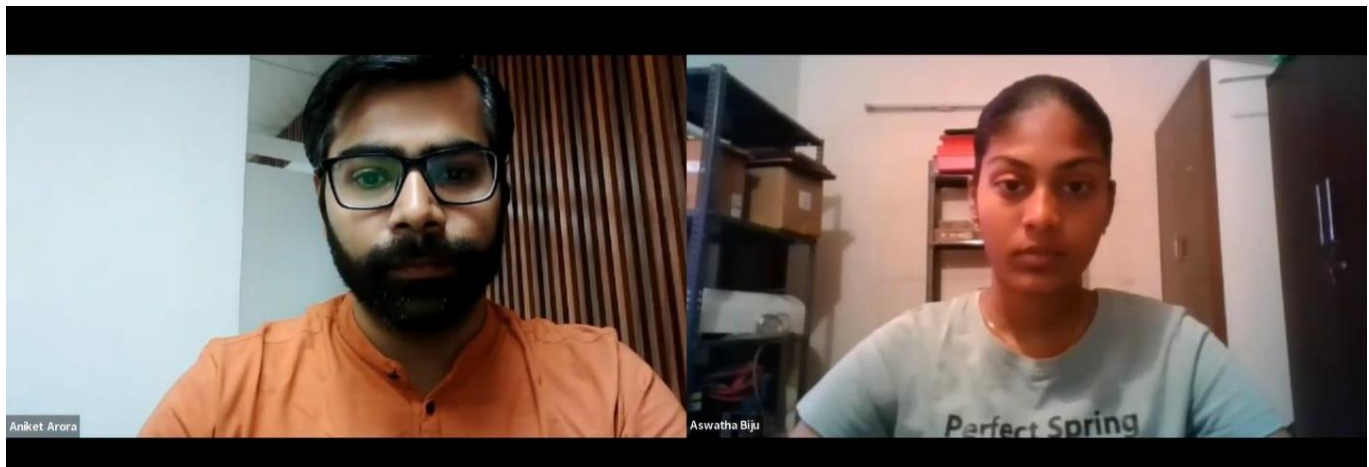
Category: Scientific and Life Skills

No. of Participants: 250+ students from different schools across India

Speakers/Presenters: Ms. Aswatha Biju (Youngest Palaeontologist in India)

Overview:

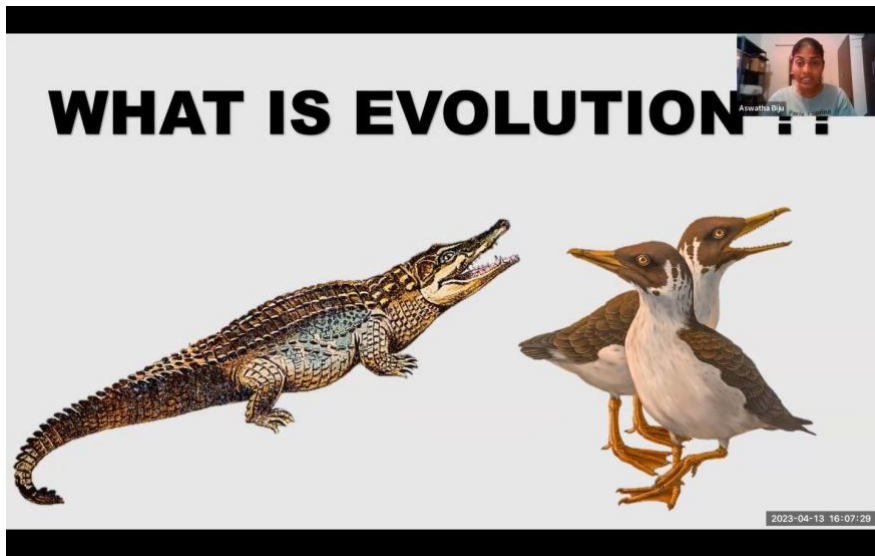
On April 13th, 2023, KAMP conducted an exclusive knowledge-sharing session on the topic "Evolution of Mammals" with 250+ students from different schools across India. The main aim of this workshop was to help students understand what evolution is, how mammals evolved, what paleontology is all about, and how we can study fossils.



The session was convened by Mr. Aniket Arora on behalf of Ms. Arika Mathur (KAMP Planning and Monitoring Committee member) and was facilitated by Ms. Aswatha Biju (the Youngest Palaeontologist in India).

In the context of mammals, the evolution of mammals began over 220 million years ago. Over millions of years, as conditions changed on Earth, new adaptations evolved that allowed mammals to thrive as the dominant land animals.

The evolution of mammals began during the Mesozoic era, around the time when dinosaurs first appeared. Since then, mammals have evolved into a diverse array of species, ranging from the tiny shrews and bats to the largest land animals, such as elephants and rhinoceroses. Throughout their evolution, mammals have developed characteristics that allow them to survive and thrive in a variety of environments. These include adaptations such as warm-bloodedness, which helps them regulate their body temperature in cold climates, and specialized teeth for grinding and chewing food. Mammals have also developed complex social behaviors, including mating rituals

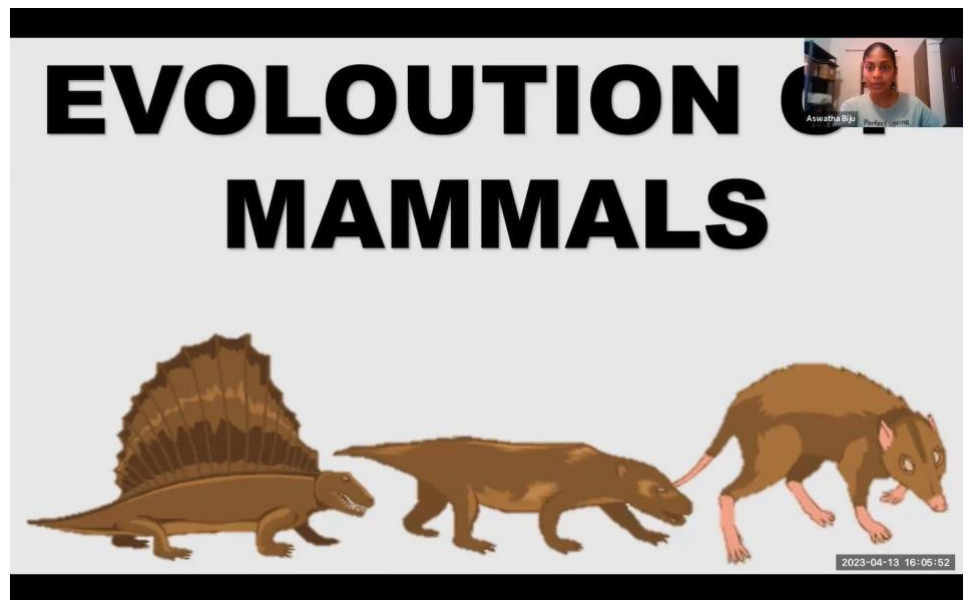


and parenting strategies. With the exception of humans, most species of mammals live in complex social groups, with individuals cooperating to rear young and protect the group from predators.

Mammals evolved from a common ancestor of mammals and reptiles, the synapsids, in the late Carboniferous period. The earliest known synapsid ancestor of mammals dates to around 312 million years ago.

This ancestor eventually diverged into two branches, the ancestors of the modern mammals and the ancestors of the modern reptiles.

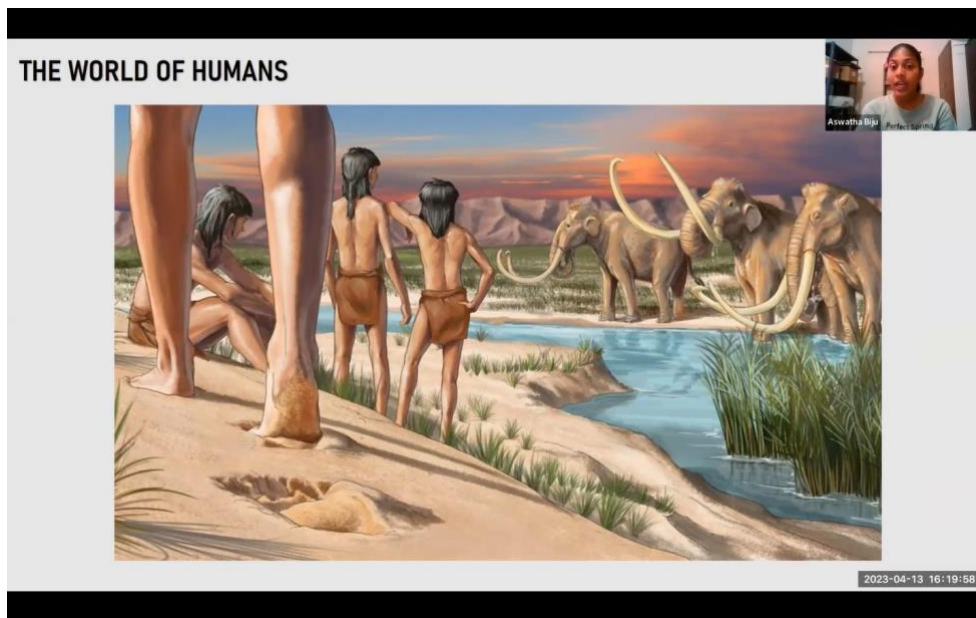
Monkeys are a subgroup of the primate family, which evolved from the same ancestor as humans, apes, and other primates. The earliest known primate ancestors, which lived around 55 million years ago, were small, arboreal mammals. Monkeys evolved from these ancestors over the following millions of years.



Ms. Aswatha rightly pointed out that we have evolved from monkeys, but they themselves have an ancestral history.

Humans and monkeys share the same ancestral history. So, monkeys themselves have been in the process of evolution, advancing from their previous organisms.

Apart from mammals, one could focus on the evolution of amphibians, reptiles, marine creatures, or even flora species; all of them have a specific set of evolution.



The purpose of KAMP's Fortnightly workshops is to help students develop creativity, meaningful learning, and critical reading and thinking skills that bring out their inherent abilities. The vision of KAMP is to identify and capture Scientific and Technological temperament in students to make India – a Global Leader in the field of Science, Technology and Humanities.

Such workshops, conducted by KAMP deal with various topics that fall under the category of Science, Technology and Innovations, Scientific and Life Skills, Career & Professional Development, Academic Development and training the trainers/teachers.

KAMP believes that with exposure to such topics from experts within such specific fields, students will become aware of real-life situations and challenges, develop a helping, problem-solving nature wherever possible, understand their core values and personal interests, evaluate their skills within the given area and achieve their best in their most desirable way.

Organised By:
Knowledge and Awareness Mapping Platform
(KAMP Operations and Coordination Office)

Moderated By:
Ms. Arika Mathur
(Convener KAMP and Member KPMC)

Team Credits:
Mr Amit Kumar Shukla
(Head-Capacity Building Group, KAMP)

Ms Vishakha Gola
(Sr. Coordinator KAMP)